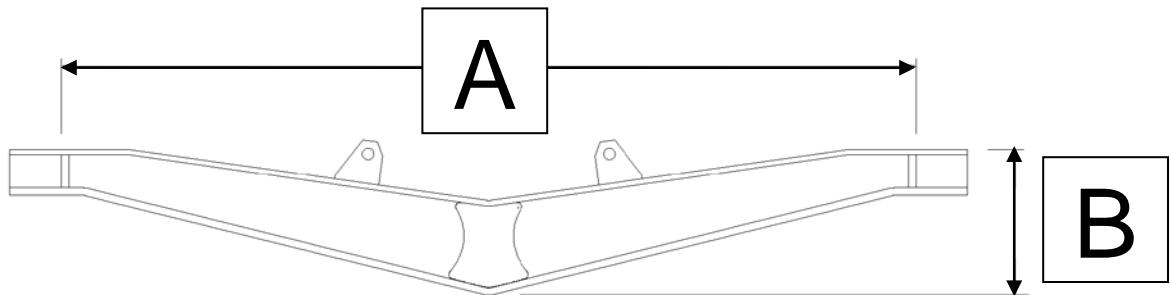


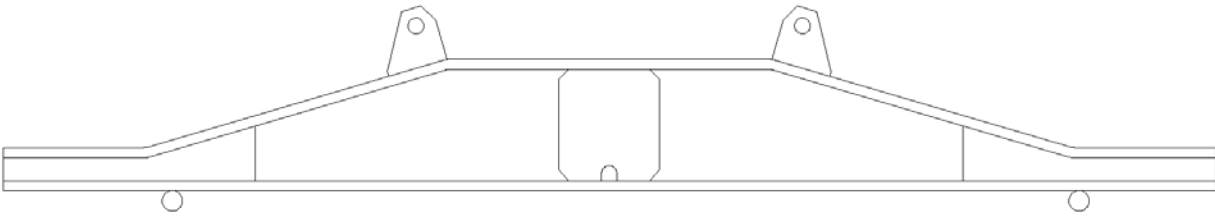
800 Series Truck Suspension Walking Beam Identification



Beam Part #	Spring Plate Part#	Axle Spread	"A" (In.)	"B" (In.)	Beam Capacity	Mounting Height
800095	800121	52	50	11-7/8	40K	LOW
800099	800115	52	50	11-1/8	40K	HIGH
800079	800691	54	52	11-1/8	40K	LOW
800103	800689	54	52	9-7/8	40K	HIGH
800087	800691	54	52	11-1/4	46K	LOW
800061	800689	54	52	10	46K	HIGH
*800688	800689	54	52	10	50K	HIGH
*800690	800691	54	52	11-1/4	50K	LOW
800091	800687	60	58	11-1/8	40K	LOW
800107	800685	60	58	9-7/8	40K	HIGH
800083	800687	60	58	11-1/4	46K	LOW
800111	800685	60	58	10	46K	HIGH
*800684	800685	60	58	10	50K	HIGH
*800686	800687	60	58	11-1/4	50K	LOW
800202	800685	72	70	11-1/16	46K	LOW
800029	04S00086	72	70	9-3/4	46K	HIGH
04S00017	800685	72	70	11-1/16	50K	LOW
800456	04S00086	72	70	9-3/4	50K	HIGH
*04S00007	800763	54	52	7-15/16	46K	X-HIGH
*800759	800763	60	58	7-15/16	46K/50K	X-HIGH
*800799	800763	54	52	7-15/16	50K	X-HIGH

Beam Numbers with () can be identified by the top flange corner that has been cut on the diagonal

800 Series Truck Suspension Walking Beam Identification



Beam Part #	Spring Plate Part#	Axle Spread	Side	Beam Capacity	Mounting Height
04S00089	04S00034	54	RH	40K	UNDER SLUNG
04S00090			LH	40K	
04S00091			RH	46K	
04S00092			LH	46K	